

ELECTRIC VIBRATORS

MOST COMMONLY USED - PERMANENTLY MOUNTED OR WITH BRACKETRY FOR CONCRETE

HIGH FREQUENCY



US-100

US-900



US-450

US-1600

HEAVY DUTY



2P-75
2P-150



2P-200



2P-450
2P-800



2P-1700, 2P-2500,
2P-3500, 2P-4500
2P-5500

HIGH FREQUENCY

PLUS FEATURES:

FOR PRODUCT

- Faster pouring
- Less cement
- Greater density
- Reduced cost
- Smoother finish
- Faster form removal

FOR VIBRATOR

- Totally enclosed
- High impact
- Up to 10,000 VPM
- Low cost
- Lightweight
- Adjustable

VIBCO US line units are all 115 volt, single phase, universal type motors with low ampere draw. They can be plugged into any light outlet or operated from field generators. All units are speed and force adjustable by rheostat or transformer. **The larger units, US-900 and 1600, also have adjustable eccentrics for obtaining even higher forces at same frequency.** VIBCO's US line is rated for intermittent operation (30 minutes of operation in an hour). Heavy duty construction, exclusive VIBCO double eccentric and unloaded shaft design assure trouble free operation and long life under rough use.

HEAVY DUTY ELECTRIC

PLUS FEATURES:

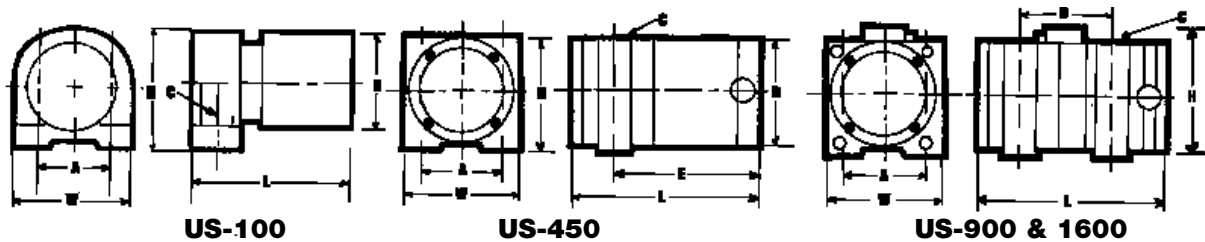
- Oversized electric motor for higher safety factor
- High heat resistant winding to take additional overload and heat
- Oversized bearings for longer life
- Infinitely adjustable eccentrics

VIBCO's noiseless, heavy duty electric vibrators are 3 phase and most models are also available in single phase. They are totally enclosed and rated for continuous duty, designed to take the toughest of service in the concrete field. The smaller units are excellent on small tables or screeds. The 2P-450 and 2P-800's are standard for many screed manufacturers. The 2P-1700 and 2P-2500 are typical vibrators for larger tables and vibrating stands. The 2P-3500 and 2P-4500 are standard for the concrete pipe manufacturer.

All VIBCO units are made in the U.S. after U.S. NEMA and ASTM standards. All spare parts readily available from VIBCO or your local distributor.

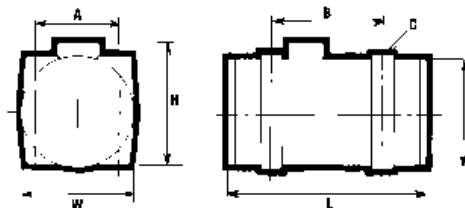
TECHNICAL DATA

Model	1 Phase Amperes at Volt		3 Phase Amperes at Volt		Force Impact				dB**	Weight**	
	115/230	230/460	lbs.	N	lbs.	N	lbs.	N		lbs.	Kg.
HIGH FREQUENCY											
US-100	.65/-	-	Speed Adjustable To				100	445	78	4	2
US-450	3.0/-	-	Speed Adjustable To				450	2002	80	13	6
US-900	4.5/-	-	600	2669	900	4003	1100	4893	85	25	11
US-1600	5.0/-	-	1100	4893	1600	7117	1900	8451	85	30	14
HEAVY DUTY											
2P-75	.5/25	.25/25	50	222	75	334	100	445	60	12	5
2P-150	1.8/9	.6/3	130	578	175	778	250	1112	63	27/23	12/10
2P-200	3/1.5	1/5	180	801	325	1446	400	1779	62	35/32	16/15
2P-450	5/2.5	1.2/6	100	445	680	3025	1100	4893	64	56/48	25/22
2P-800	8/4	2/1	100	445	1000	4448	1750	7784	70	86/78	39/35
2P-1700	-	3/1.5	600	2669	1500	6672	2500	11120	72	90	41
2P-2500	-	5/2.5	500	2224	1650	7339	3000	13344	73	105	48
2P-3500	-	5/2.5	500	2224	1650	7339	3000	13344	75	105	48
2P-4500	-	5.5/2.8	2200	9786	3430	15257	5000	22240	76	110	50
2P-5500*	-	8/4	4500	20016	5500	24464	6500	28912	78	220	100



DIMENSIONS HIGH FREQUENCY

Model	A		B		C		D		E		L		W		H	
US-100	5	127	-	-	3/8	10	4	102	5 1/2	140	6 3/4	171	6	152	4 1/4	108
US-450	3 1/2	89	-	-	1/2	12	4	102	6 1/2	165	8 1/4	210	4 7/8	124	4 1/8	105
US-900	3 1/2	89	6 7/8	175	1/2	12	4	102	-	-	11 1/8	283	4 7/8	124	6 1/4	160
US-1600	4 1/2	114	7	178	1/2	12	4 1/2	184	-	-	11 1/4	286	5 5/8	143	5 5/8	143



DIMENSIONS HEAVY DUTY

Model	Phase	A		B		C		D		L		W		H	
2P-75	1	3	76	4 11/16	117	5/16	102	3 9/16	90	7 1/2	190	4 1/8	105	5	127
2P-150	1 & 3	3 1/2	89	7	178	1/2	102	4	102	11 3/16	284	4 7/8	124	6 1/4	160
2P-200	1 & 3	4 1/2	114	6 15/16	178	1/2	102	5 1/16	130	11 3/16	284	5 3/4	145	6 3/8	162
2P-450	1	5	127	8 3/8	210	5/8	184	6	152	13 1/2	343	6 1/2	165	7 3/8	187
2P-800	1	5 1/2	140	9 5/8	244	5/8	16	7	178	14 3/4	375	7 1/4	184	8 1/2	216
	3	5 1/2	140	8 5/8	215	5/8	16	7	178	13 1/2	343	7 1/4	184	8 1/2	216
2P-1700	3	5 1/2	140	10 13/16	275	5/8	16	7	178	16 1/2	420	7 1/4	184	8 1/2	216
2P-2500	3	5 1/2	140	11 5/8	291	5/8	16	7	178	17 3/8	441	7 1/4	184	8 1/2	216
2P-3500	3	5 1/2	140	11 5/8	291	5/8	16	7	178	17 3/8	441	7 1/4	184	8 1/2	216
2P-4500	3	5 1/2	140	11 5/8	275	5/8	16	7	178	18 7/8	480	7 1/4	184	8 1/2	216
2P-5500	3	7 1/8	200	12 13/16	325	1	25	8 7/8	225	22 1/4	565	10 1/4	267	10 1/2	267

NOTE: Dimensions and data subject to change without notice.